

Alibaba.com Verified Supplier

Verified

Assessment Report Presented to

Jinhua Queene Electric Technology Co., Ltd.
金华市群誉电动科技有限公司

Assessment Report

Report number	150338318_P+T
Report date	2023-09-20
The validity Period of Report	2023-09-21 - 2024-09-20
Report Verification Address	https://www.intertek.com.cn/ASVService/Home/IndexCN

Assessment Type	Production Trading Assessment
Assessor's Name	Owen Wu
Reviewed by	Alan Li

Important Notes

INTERTEK Disclaimer:

This report reflects our findings for the particularly concerned company on the date of our service only. This report does not discharge or release the factory/sellers/suppliers from their commercial, legal or contractual obligations with buyers in respect of products provided by the factory/sellers/suppliers. Any reader other than the party for whom this report has been specifically issued is hereby informed that the general conditions of service of INTERTEK contain liability limitation provisions.

Alibaba.com's Disclaimer:

This report has been independently prepared by a third party verification agency. The report is provided on an "AS IS" and "AS AVAILABLE" basis. The information contained in the report may change without notice and no obligation is assumed to update the information after publication. Alibaba (including its affiliates) is not involved in the preparation of the report. Publishing of the report by no means means that Alibaba endorses or recommends the report. Therefore, Alibaba cannot be held responsible for any inaccuracy or omission in the report. To the maximum extent permitted by law, Alibaba expressly disclaims any warranty, expressed or implied, in regard to the report, including any implied warranty of merchantability, fitness for a particular purpose or non-

infringement. Your use of or reliance on this report will be at your own discretion and risk. To the maximum extent permitted by law, in no event shall Alibaba be liable for any party for any direct, indirect, punitive, incidental, special or consequential damage costs, expenses, legal fees or losses or any damages whatsoever arising out of or in any way connected with any use of the report even if advised of the possibility of such damages.



Company Name

金华市群誉电动科技有限公司

Company Name (English)

Jinhua Queene Electric Technology Co., Ltd.

Gold Supplier & Assessed Company Relationship

Self Owned

Gold Supplier Member ID:

qyebike

Company address

4F, No. 816 Huatai Street, Dongxi Industrial Park, Bailongqiao Town, Wucheng District, Jinhua City, Zhejiang Province, China

Registered address

4F, No. 816 Huatai Street, Dongxi Industrial Park, Bailongqiao Town, Wucheng District, Jinhua City, Zhejiang Province, China

Business type

Combined

Company website (URL)

<http://qy-ebike.en.alibaba.com>

Contact person

Mr.Yadong Zhou

Telephone number

0086-13738112035

Email

acerzhou@126.com

certification authority

INTERTEK

Consigner of Assessment

Alibaba

Report number

150338318_P+T

Report date

2023-09-20

The validity Period of Report

2023-09-21 - 2024-09-20

Assessor's Name

Owen Wu

Reviewed by

Alan Li

Report Verification Address

<https://www.intertek.com.cn/ASVService/Home/IndexCN>



Business License



Date of Incorporation

2016-09-27

The validity Period of Business License

2016-09-27

Company License expiration date

long time

Annual review conducted by the Industrial & Commercial Bureau?

Yes

Registered capital

1000000 CNY

Business license number

91330701MA28EC058U

Unified Social Credit Code

91330701MA28EC058U

Customs registration No.

33072600G5

Corporate representative

Mr. Lixiang Zhang

Is it a publicly listed company?

No

Type of site evidential material

Lease Agreement

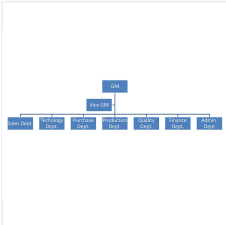
Company Environment



Floor space (square meters)

4183

Organizational structure



Employees distribution

Department	Full-time employees	Part-Time Employee(s)	Total
GM	1	0	1
Vice GM	1	0	1
Sales Dept.	3	0	3
Technology Dept.	2	0	2
Purchase Dept.	1	0	1
Production Dept.	9	0	9
Quality Dept.	2	0	2
Finance Dept.	3	0	3
Admin. Dept.	1	0	1

Number of Full Time Employee

23

Number of part-time employees

0

Number of all employees

23



Main products

Main product categories

Category	Product category
Sports & Entertainment>>Cycling>>Electric Bicycle	Electric Bicycle
Sports & Entertainment>>Cycling>>Electric Bicycle>>Electric Cargo Bike	Electric Trike
Sports & Entertainment>>Cycling>>Electric Bicycle Part	Electric Bicycle Part

Products sold in the last 12 months

Product category	Quantity	Revenue (USD)
Electric Bicycle	11000 Pieces	7600000
Electric Trike	350 Pieces	300000
Electric Bicycle Part	10000 Pieces	100000

Annual output (previous year)

Product category	Production line capacity (monthly)	Actual units produced (previous year)
Electric Bicycle	920 Pieces	11000 Pieces
Electric Trike	3000 Pieces	30000 Pieces
Electric Bicycle Part	900 Pieces	10000 Pieces

Total output (annually)

Electric Bicycle: 11000 Pieces; Electric Trike: 30000 Pieces; Electric Bicycle Part: 10000 Pieces

Competitive Advantage of Product Line

They are equipped with the rich theoretical knowledge and technical experience. It provides vast customers with superior products, exquisite technical assistance and excellent after-sales service. Quality First, Service supreme, Customer's interest utmost" is their managing objective.

Number of product categories

12

Number of models

50



Import and export license



Import and Export Enterprise Code

02279660

Export experience (years)

7

Industry experience (years)

7

Number of foreign trade employees

3

Trade employee work experience

Over 30 Years

0

21-30 Years

0

11-20 Years

0

6-10 Years

3

2-5 Years

0

Less than 2 years

0

Total revenue (previous year in USD)

8000000

Total export revenue (previous year in USD)

8000000

Number of foreign sales agents

0

Nearest port

Shanghai Port, Ningbo Port

Payment terms

FOB, CIF, EXW

Payment methods

L/C, TT, Credit Card, West Union

Average lead time (order confirmation to delivery)

Product Category	Num	Unit
Electric Bicycle	2	months
Electric Trike	2	months
Electric Bicycle Part	20	days

The Shortest Sample Time

Product Category	Num	Unit
Electric Bicycle	3	days
Electric Trike	3	days
Electric Bicycle Part	3	days

Market distribution

Market	Revenue (USD)	Total revenue (%)	Product category(s)
North America	Confidential	39	Electric Bicycle, Electric Trike, Electric Bicycle Part
South America	Confidential	2	Electric Bicycle, Electric Trike, Electric Bicycle Part
Eastern Europe	Confidential	20	Electric Bicycle, Electric Trike, Electric Bicycle Part
Southeast Asia	Confidential	1	Electric Bicycle, Electric Trike, Electric Bicycle Part

Market	Revenue (USD)	Total revenue (%)	Product category(s)
Oceania	Confidential	2	Electric Bicycle, Electric Trike, Electric Bicycle Part
Mid East	Confidential	20	Electric Bicycle, Electric Trike, Electric Bicycle Part
Western Europe	Confidential	5	Electric Bicycle, Electric Trike, Electric Bicycle Part
Central America	Confidential	1	Electric Bicycle, Electric Trike, Electric Bicycle Part
Eastern Asia	Confidential	10	Electric Bicycle, Electric Trike, Electric Bicycle Part

Main clients

Clients name	Product category(s)	Total revenue(%)
Confidential	Confidential	

Main clients types

Brand business, Retailer, Wholesaler

Supported languages

Language	Listening & speaking	Reading & writing
English	yes	yes

There is/are ___R&D engineer(s) in the company.

2

R&D engineer education

Doctorate

0

Post-Graduate

0

Graduate

2

Junior college

0

Technical school

0

High school

0

R&D engineer work experience

Over 30 Years

0

21-30 Years

0

11-20 Years

0

6-10 Years

2

2-5 Years

0

Less than 2 years

0

Quantity of new products (yearly)

Product category	Quantity
Electric Bicycle	15 Pieces
Electric Trike	5 Pieces
Electric Bicycle Part	50 Pieces

Shortest time for new products to be launched

Product category	Quantity	Unit
Electric Bicycle	7	days
Electric Trike	7	days
Electric Bicycle Part	3	days

What design services are provided?

Customization based on sample, Customization based on graphic design, Customization

What simple customization services are provided?

Confidential

Design Process

Description	Image

What are the equipments that R & D employees are using?

Please list the equipments below	Image

Please list the main softwares that are used:

N/A

Have the designed products been tested by a third-party inspection body?


YES, All designed products have been tested

Does the company has qualification requirements for designers?


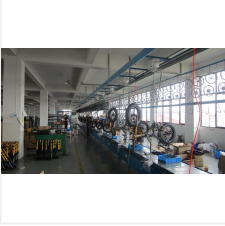

YES, with written Job Description



Production Machinery

Machine Name	Brand & Model No.	Quantity	Number of years used	Condition	Image
Pressure Bowl Machine	No Information	1	3	Acceptable	

Production Flow

Process description	Image
Incoming Material	
Assembly	
Inspection	

Number of employees in each production Line

Production Line	Supervisor	Number of operators	Quality control inspectors
Workshop	1	9	2

Subcontractors

Outsourcing Unnecessary

Equipment number

Production line number

1

Work Instruction

Yes

Clear Production Process

Yes

Production management system

Yes

How many QA or QC inspectors in total?

2



Are all production lines have quality control?

Yes

How are finished products inspected?

Inspection of all products

Testing Machine

Machine Name	Brand & model No.	Quantity	Number of years used	Condition	Image
Electric Bike Tester	FEIHONG&FH100	1	3	Acceptable	
Electric Bike Battery capacity Tester	QUNTIAN&QTBC508	6	3	Acceptable	

Quality Management Process

Process description	Image

Are written instructions available for onsite material inspection/testing? Are the relevant records maintained?

Yes, with clear written instructions and records

Does the enterprise perform inspection on finished products and keep records

Yes

Does the company have any supplier assessment procedure and management?

Yes

Collaboration with Fortune 500 list of companies

No

Self owned after-sales service countries

N/A

Provide expatriate engineer to provide after-sales service?

N/A

The content of overseas services provided

N/A


Is it possible to provide expatriate engineer services?

no

Do you have an overseas showroom?

N/A

Have you participated in offline trade shows?

Trade show name	Date attended:	Country/Region:	Images taken at the Trade show
China Cycle 2019	2019-5-5	China	

Does the merchant have the ability to provide buyers with material packages?

No

Do you have Project capability ?

No

Do you have flexible customization capability?

No



Cooperation suppliers (total)

50

Suppliers (cooperations more than twice)

50

MOQ for each item

1-10

Small MOQ cases

Product category	MOQ (in the last 12 months)	Shortest lead time
Electric Bicycle	1	3 Days
Electric Trike	1	3 Days
Electric Bicycle Part	1	3 Days

Do you have an overseas warehouse?

N/A

Large brand agent processing

Product category	Big brand name
N/A	N/A

Does the merchant support delivery to the buyer's designated Amazon warehouse?

No



Do you have a complete after sales service capability?

Yes

Does the enterprise record and follow up customer complaints and feedback

Yes, with a standard feedback form and records

Are there any clear procedures to handle customer complaints?

Yes, with clear procedures but no written records

Is there a closed-loop corrective action system in place?

Yes

Can finished/packaged products be traced by lot identification to the appropriate raw material?

Yes, main raw material can be traced

Is there a product alert and recall procedure?

Yes

Warranty period

Product category	Average Guarantee Number	Average warranty unit
Electric Bicycle	1	year
Electric Trike	1	year
Electric Bicycle Part	6	months



Product parameters

Electric bike wattage

product category	Select function
Sports & Entertainment > Cycling > Electric Bicycle > Electric City Bike	< 200w, 351 - 500w, > 500w, 200 - 250W, 251 - 350W, 501 - 750W, 751-1000W, >1000W
Sports & Entertainment > Cycling > Electric Bicycle > Electric Mountain Bike	< 200w, 351 - 500w, > 500w, 200 - 250W, 251 - 350W, 501 - 750W, 751-1000W, >1000W
Sports & Entertainment > Cycling > Electric Bicycle > Electric Cargo Bike	< 200w, 351 - 500w, > 500w, 200 - 250W, 251 - 350W

Electric bike battery capacity

product category	Select function
Sports & Entertainment > Cycling > Electric Bicycle > Electric City Bike	7 Ah, 7.6 Ah, 8.7 Ah, 9.5 AH, 10.5 AH, 11 ah, 13.4 Ah, 16.7 Ah
Sports & Entertainment > Cycling > Electric Bicycle > Electric Mountain Bike	7 Ah, 7.6 Ah, 8.7 Ah, 9.5 AH, 10.5 AH, 11 ah, 13.4 Ah, 16.7 Ah
Sports & Entertainment > Cycling > Electric Bicycle > Electric Cargo Bike	7 Ah, 7.6 Ah, 8.7 Ah, 9.5 AH, 10.5 AH, 11 ah, 13.4 Ah, 16.7 Ah



Industry capabilities

what are the main categories of suppliers in the alibaba international station?

Sports & Entertainment